

RATES & RESERVATIONS:

We are happy to offer several choices of rooms at various rates (plus 10% tax). All room rates are based on double occupancy and include a delicious and bountiful breakfast. Some rooms can accommodate additional guests (additional charge of \$35 per guest). We welcome Visa, Mastercard, and Discover. When making a reservation, please mention any discounts or gift certificates you plan to use.

CHECK-IN:

You may check-in anytime after 4:00 pm. Please advise us if you expect to arrive prior to 4:00 pm or after 8:00 pm. Check-out time is 11:00 am.

ADDITIONAL DETAILS:

- We will be happy to make recommendations and reservations for you at local restaurants and activities.
- We have a smoke-free inn. Smoking is permitted outside on the porch and in the gardens.
- Gift certificates are available.
- We cannot accommodate pets; they will be happier at home.
- The Vintage Towers is the perfect setting for weddings and other gatherings. The Inn, garden, and gazebo can comfortably host fifty people for receptions or business meetings -- a delightful spot for small ceremonies.

DIRECTIONS

FROM THE NORTH

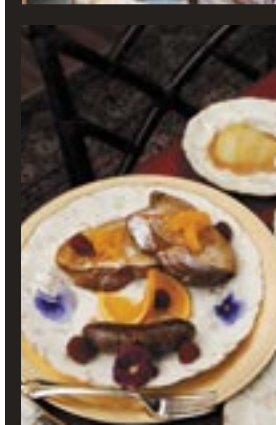
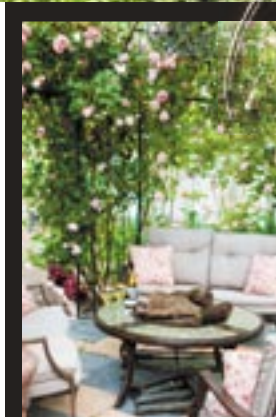
1. Take Highway 128/Cloverdale exit
2. At the stop sign turn Left onto Cloverdale Blvd.
3. Go approximately 2 miles into downtown Cloverdale (DO NOT TAKE the 128 turn-off to the right)
4. At the first stop sign, turn Left onto 3RD Street
5. Go one block to North Main Street
6. VINTAGE TOWERS is on the northeast corner of the intersection

FROM THE SOUTH

1. Take the CITRUS FAIR DRIVE exit
2. At the stop sign turn LEFT and go 1/4 mile to the stop light
3. Turn RIGHT onto CLOVERDALE BLVD
4. Drive approximately 1/2 mile through downtown to 3RD Street (stop sign)
5. Turn RIGHT onto 3RD ST
6. Go one block to North Main Street.



WWW.VINTAGETOWERS.COM



A VINTAGE INN AT WINE COUNTRY'S CROSSROADS

Come discover Vintage Towers, a lovingly preserved Queen Anne Victorian located at the crossroads of four of California's most glorious wine regions. Close to the charming town of Healdsburg and the stunning outdoor recreation area of Lake Sonoma, Vintage Towers is your perfect wine-country destination.

WWW.VINTAGETOWERS.COM

Vintage Towers Bed and Breakfast

302 Main Street

Cloverdale, California 95425

(888) 886-9377 or (707) 894-4535

info@vintagetowers.com

A SAMPLING OF OUR WONDERFULLY UNIQUE ROOMS. . .



VINTAGE TOWER SUITE

This large royal-blue suite is furnished with a stunning Eastlake queen-size walnut and marble bedroom set dating back to the 1860's. There is a five-sided tower featuring a romantic sitting area and fireplace for relaxing. The original bathroom has a vintage pedestal sink and claw foot soaking tub and shower. Enjoy the private balcony, complete with a telescope for stargazing.



HELEN'S TOWER SUITE

This butter-yellow suite boasts a king-size iron and brass bed, complemented by a carved Victorian fainting couch. A matching Victorian parlor set and fireplace are located in the square tower of the suite, which looks out on the gazebo below. Take a long soak in the antique claw foot tub to unwind before slipping into bed.



JUDITH'S TOWER SUITE

Located in the mansion's original circular tower dating back to 1901, this suite is decorated with a queen-size sleigh bed and matching bedroom set in antique black walnut. The sitting area with TV, fireplace and loveseat (which converts to a twin sleeper), offers a panoramic view of the area. There is a private bath with a claw foot tub and shower.

TWO MORE ROOMS

Visit our website at www.vintagetowers.com to view two more rooms, Scarlet's Room and Mary's Room.

WWW.VINTAGETOWERS.COM

ROSE'S ROOM

This spacious sunny room boasts a brass queen-size bed, accompanied by marble bedside tables. There's also a twin daybed with a hidden trundle bed underneath, so this room will accommodate up to four adults, if needed. There's two comfy wing-back chairs by the electric stove for reading or relaxing. If you're in the mood for a bubble bath in the claw foot soaking tub, it's just a few steps from the bed, because the tub is right in the room! A separate water closet, for privacy, and an antique armoire complete the room.



ALICE'S SUITE

This large space on the ground floor of the inn offers the perfect solution for family vacations, girlfriend getaways or simply a couple that prefers a lot of room. Alice's Room can be rented as a single room with a carved walnut king bed and a loveseat (that converts to a twin sleeper) for cuddling or watching TV. This space can also be rented as Alice's Suite, with the second adjoining room containing a full-size sofa, DVD and CD player, and a sitting area by the fireplace. Both rooms have pale blue walls, TVs and share a private bath featuring an inlaid tile walk-in shower.



BREAKFAST

In the morning, you will be charmed out of bed and down the great staircase by the aroma of a multi-course gourmet breakfast, prepared using produce from our own gardens. Specialties include Basil and Artichoke Frittata, Orange-Zested French Toast, Cherry Scones, and Apricot Cream Cheese Coffeecake.

